

MODEL DF-2W & DF-3

Offering a unique design that allows for the insertion and automatic discharge of tablets, the DF-2W and DF-3 Friabilators execute this process without the need for opening or removing the drum from the units' shaft. The DF-2W and DF-3 meet or exceed the USP-EP Standards and offer time and resolution count programming.

- **TWO MODELS**

The DF-2W and DF-3 are both multi-drum models, while the DF-2W has the added capability of calculating tablet weight loss and % friability as well as an analytical balance interface.

- **AUTOMATIC DISCHARGE**

After completion of each test cycle, samples automatically discharge into individual sample trays that can be easily removed for tablet de-dusting and weighing.

- **INNOVATIVE DRUM DESIGN**

Mounting of up to 2 drums on a single shaft and a unique side loading feature allows tablets to be introduced without the need for drum removal.

The drum design positively engages the drive to prevent slippage and a snap-lock knob holds the drums in position.

- **DRUM SUPPORT**

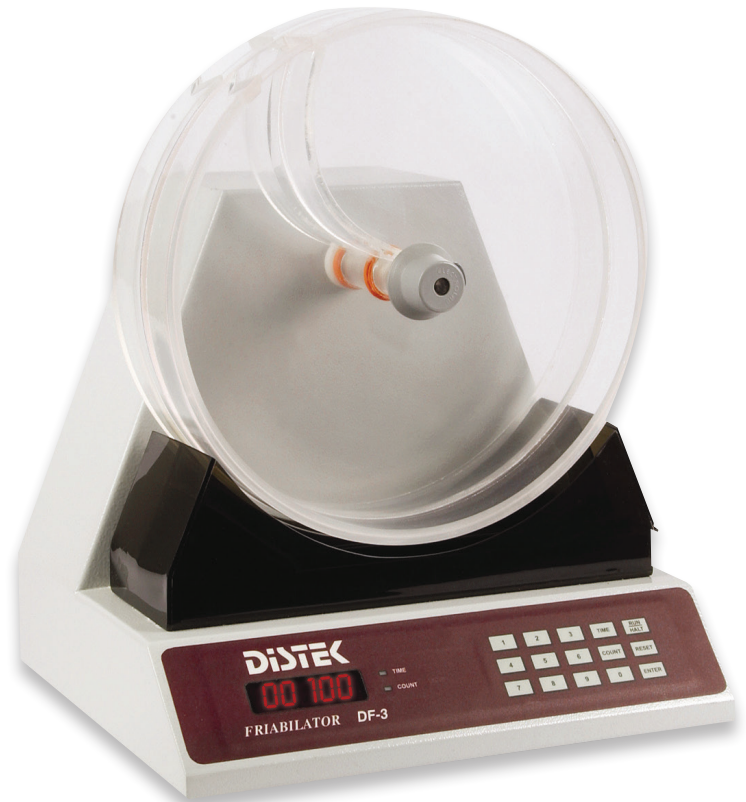
An "optional" Abrasion drum is available for more rigorous testing of tablets and coating integrity.

- **SELF-VALIDATION**

Self-Validates speed and revolution count.

- **BUILT-IN TILT FEET**

Preventing large tablet binding, (as per USP recommendations) convenient hideaway arms permit tilting of drums 10°.



SPECIFICATIONS

	DF-2W	DF-3
# of Drums	2	2
Speed	20 to 50 RPM	25 RPM
Accuracy	± 0.5 RPM	± 1 RPM
Timer	1 second to 9 hours, 59 minutes, 59 seconds	1 second to 9 hours, 59 minutes, 59 seconds
Counter	1 to 9,999 Revolutions	1 to 99,999 Revolutions
Display	24 x 2 Character LCD	5 Digit LED
Printer Interface	Serial	--
PC Connectivity	Standard: Serial Optional: External LAN	-- --
Electrical Power	100/110 V AC ± 10%, 50/60 Hz, 18 VA 200/230 V AC ± 10%, 50 Hz, 18 VA	100/110 V AC ± 10%, 50/60 Hz, 18 VA 200/230 V AC ± 10%, 50 Hz, 18 VA
Dimensions (W x H x D)	14" (w) x 17" (h) x 12" (d) 35 cm x 43 cm x 31 cm	14" (w) x 17" (h) x 12" (d) 35 cm x 43 cm x 31 cm
Weight	26.4 lbs. / 12 kgs	26.4 lbs. / 12 kgs

ACCESSORIES

ACCESSORY	PART NUMBER
Abrasion Drum	EL-245-201M
Friability Drum	EL-245-200M
Drum Coupler	EL-245-202M
Drum Pin (Set of 5)	EL-245-214M
Drum Spacer (Set of 2)	EL-245-213M
Knob	EL-245-204M
Tray (Set of 2)	EL-245-206M
Legs (Set of 2 Front and 2 Rear)	EL-245-207M